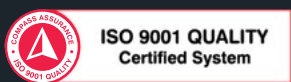




OUTDOOR LIGHTING CATALOGUE

EDITION 2





About us

We began our journey with LED in 1996, manufacturing "indicator class" LED products before transitioning to "illumination Class" lighting products in 2009.

Today, we apply our lighting knowledge to create sustainable outcomes for discerning commercial and industrial clients, where project technical support and dependable solutions are paramount.

Our team can create flexible lighting solutions that may not appear in a catalogue. Our bespoke solutions are used in complex major infrastructure lighting upgrades across Australia, driving us to even greater achievements in the future.

Exceptional Customer Experience

We provide expertise at no extra cost for post-sales support, guiding you through product selection, especially for complex installations. Our technical team, well-versed in areas like obtrusive light control, becomes your resolute partner.

Lumitex is not just about lighting; it is about delivering a professional, high-quality illumination experience. Trust us to light up your outdoors with brilliance and dependability. Your vision, our expertise – let us create success together.



CONTENTS

- 2** Lighting Design Services
- 3** Obtrusive Light
- 4** Compliance and Safety

- 6** General Purpose Floodlights
 - Security
 - Signage



- 12** Sports Field Lighting



- 16** Tennis Courts
Car Yards



- 20** Area Lights



- 22** Bollards



- 23** Decorative Pathway/Roadway



- 26** Pathway/Roadway



- 28** Industrial Explosion Proof



- 30** Solar Lights



Short form catalogue

This is a short-form catalogue. To see a larger range, visit lumitex.com.au, or call us for more extensive lighting solutions on 1300 337 809

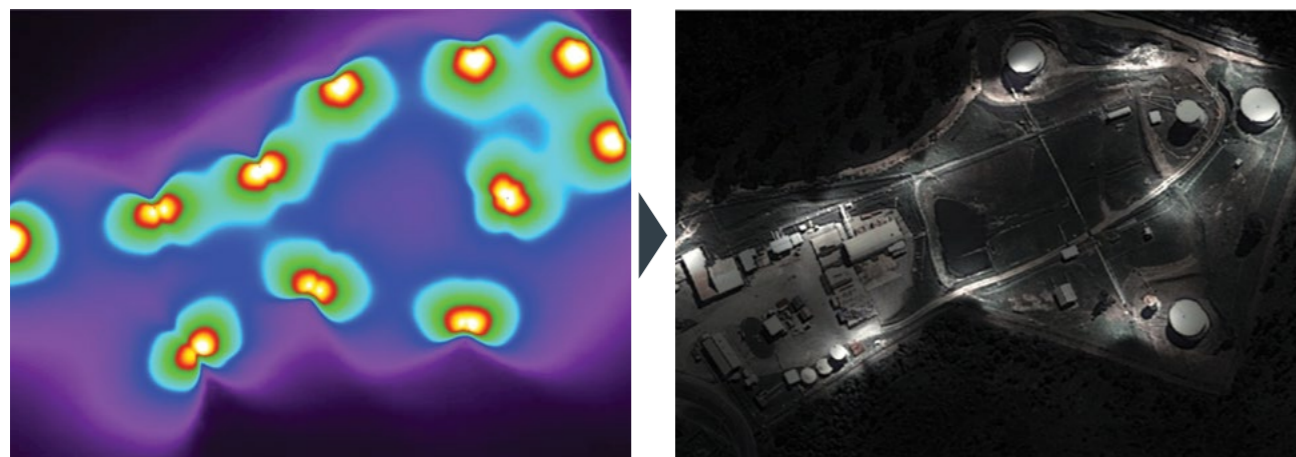
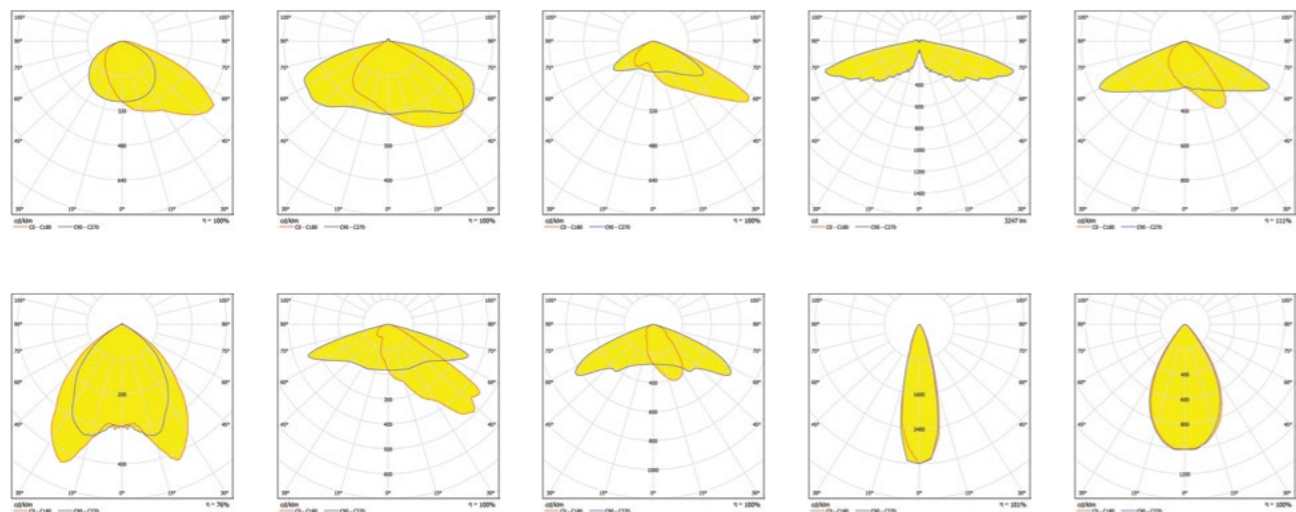
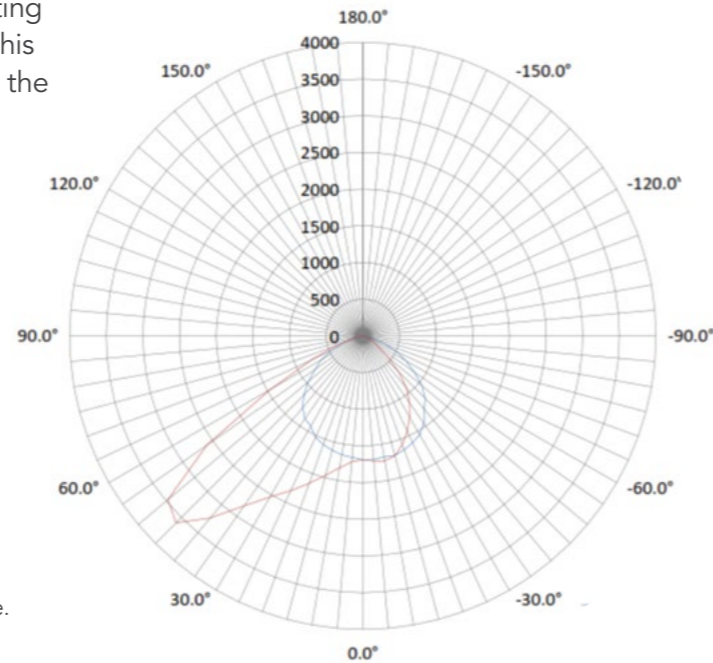
Lighting Design Services

Lumitex offers a complimentary commercial lighting design service to assist with product selection. This is a critical element of a successful project, given the very wide selection of solutions available.

Our lighting design service will consider many aspects of the proposed installation, including minimum lighting levels, obtrusive light, glare, environmental factors, colour temperature and suitability for the application.

Lumitex is proficient with Dialux and AGi32 design software, allowing a prediction of the performance before installation, saving time and removing uncertainty. We are conversant with the latest Australian lighting Standards, ensuring our design is compliant for the chosen application.

Lumitex products are available to order with an increasing number of options. Getting it wrong can be costly, which makes our complimentary design service exceptional value.



Our responsibility to control obtrusive light

When we have a chance to escape the city and the sky is clear, the stars are an amazing sight. Unfortunately, light pollution is the primary reason our view of the stars is limited from the city.

LIGHT POLLUTION IS CATEGORISED FURTHER INTO:

- URBAN SKY GLOW** - Cities with glowing skies above
- LIGHT TRESPASS** - Light shining into unwanted areas.
- GLARE** - Excessive brightness causing high contrast and decreased visibility.
- CLUTTER** - Numerous light sources, common to urban areas, contributing to symptoms above.

CLUTTER COMPLIANCE AND SAFETY- NUMEROUS LIGHT

LED lighting offers unprecedented control over light and empowers designers with the ability to reverse the effects of light pollution. However, while the LED products are available to bring this important benefit, not every LED installation is taking advantage of the innovative glare control characteristics on offer.

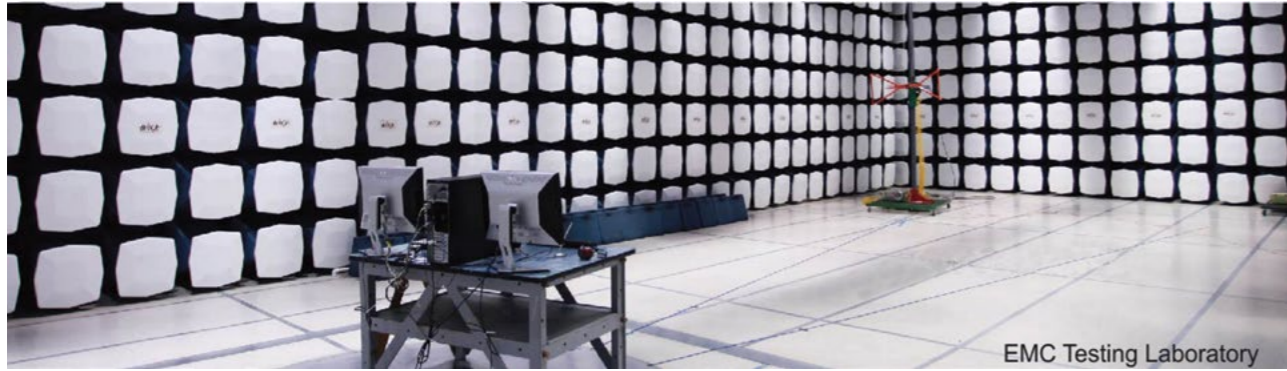
Given that LED lighting is a "point source" light compared to traditional lighting, glare can be an even greater issue with LED if good design is not correctly implemented. For buyers of LED lighting who agree that we should be reversing light pollution, stand firm and insist on high-quality, lens and shield based glare control

options wherever possible so the light is directed to where it is needed. The products to deliver this solution are ready and waiting. The revised obtrusive light Standard AS4282 is now active. Ask us how we can limit glare in your next lighting project.



Compliance and Safety

Be assured that Lumitex products meet or exceed the latest Australian Standards. All testing is performed in NATA Accredited laboratories.



EMC Testing Laboratory



ERAC Responsible Supplier E347



Outdoor lighting requires a high level of scrutiny and several layers of compliance to ensure performance, safety and longevity, particularly in harsh environments.

As a result, testing encompasses various aspects for each lighting category, including radio frequency emissions, safety, photometric performance, impact resistance, water ingress protection, vibration resistance, salt resistance, and other relevant criteria. Our commitment to meticulous attention to detail and the provision of high-quality lighting solutions is reflected in our adherence to ISO 9001:2015 Quality Management standards.

This has provided confidence to the mining industry, local and state government and large scale construction and engineering companies.

Lumitex LED lights are specified both in Australia and overseas, where quality and performance are primary considerations.

The Lumitex checklist

- ✓ Safety
- ✓ EMC

- ✓ Performance
- ✓ Quality

- ✓ Support
- ✓ Innovation



A custom floodlight is assessed for performance in a photometric testing device.

General Purpose Floodlights

Activus



A multi-purpose, high-quality LED floodlight ideally suited to parks, parking areas and architectural lighting applications.

Available in a range of lumen and beam angle packages to suit a variety of demanding lighting environments.

FEATURES

- Range of optics for a wide variety of professional lighting applications.
- Protective UV stabilized powder coated finish.
- Proprietary thermal management.
- Easy installation.
- Serviceable design.
- High strength tempered glass.
- Stainless steel screws.



Download latest datasheet



IK08

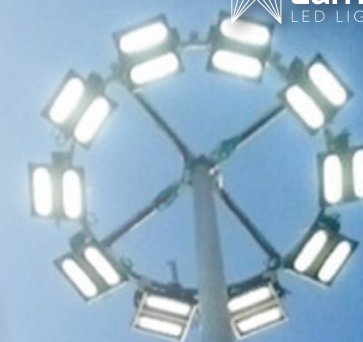
IP66



General Purpose Floodlights

Betta

A multipurpose, high-quality LED floodlight available in a wide range of options to suit various applications.



FEATURES

- Full range of optics for a wide variety of commercial and industrial lighting applications.
- Popular replacement for parks, mine sites, architectural applications, general purpose lighting.
- Lens on chip technology assists obtrusive light control.
- Wide voltage input.
- Dimmable options available.
- Protective UV stabilized powder coated finish.
- High strength tempered glass.

General Purpose Floodlights

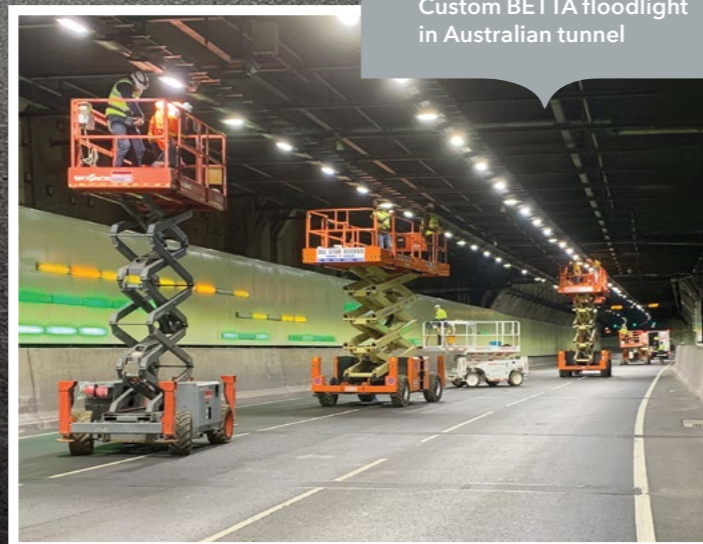


Betta

I would like to commend all those involved in completing this work in such an efficient manner. All staff members worked seamlessly together from the planning stage all the way through to installation.

The result is a great improvement to our work space and has been much appreciated across the workforce.

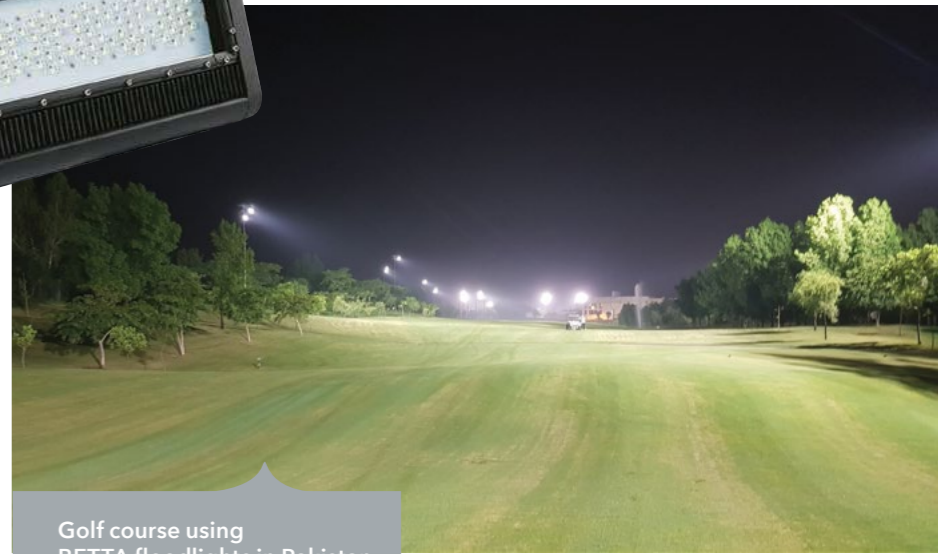
Matthew,
Downer Bombardier Australia



Custom BETTA floodlight in Australian tunnel



RGB BETTA Floodlights on shopping mall in Pakistan



Golf course using BETTA floodlights in Pakistan



Download latest datasheet

Sports Field Lighting

Sportsmaster



Elevate the Game with Lumitex LED Sports Lights.

From tennis courts to hockey fields, soccer pitches to AFL arenas, Lumitex LED sports lights are engineered to revolutionize your sporting experience. Our cutting-edge lighting solutions are designed with precision, offering players enhanced visibility and fans an unforgettable spectacle. We recognize the importance of lighting science and are committed to delivering compliant solutions that minimize light pollution in even the most sensitive environments.

Lighting design software is used to predict performance results before any lights are installed.



Unparalleled Versatility

Our extensive range of lighting options ensures that we have the perfect LED sports lights for any application, whether it's an indoor arena or an outdoor field. With the added convenience of dimmable control options, you have complete flexibility to tailor the lighting to your specific needs.



Sports Field lighting

Ludex Sport

Our extensive array of LED lighting solutions empowers us to pinpoint the perfect product for any application. Whether you require LED sports lights for indoor or outdoor use, our selection has you covered. Moreover, our dimmable control options provide an extra layer of adaptability, allowing you to fine-tune the lighting to your specific needs.

But where it truly begins is with a simple phone call or email.

At Lumitex, we extend a no-obligation commercial lighting design and consultation service. This service is designed not only to help determine the feasibility of your project but also to ensure that it aligns seamlessly with your expectations as a valued client. We're here to guide you, every step of the way, in crafting the ideal lighting solution for your unique requirements.

Lumitex delivers...

- ✓ Exceptional uniformity
- ✓ Precision optics
- ✓ Superior glare control
- ✓ Unprecedented visual clarity
- ✓ Reliability and longevity
- ✓ Energy efficient operation



Precision mechanisms are built into Ludex Sport to facilitate positioning and alignment.

FEATURES

- Built tough and reliable for unforgiving Australian conditions.
- Superior uniformity.
- 5 year product warranty, first 3 years with labour.
- Excellent glare control.



5
Year
Warranty

IK08

IP65



Download
latest datasheet

Tennis Courts

Court Master

An advanced area lighting solution

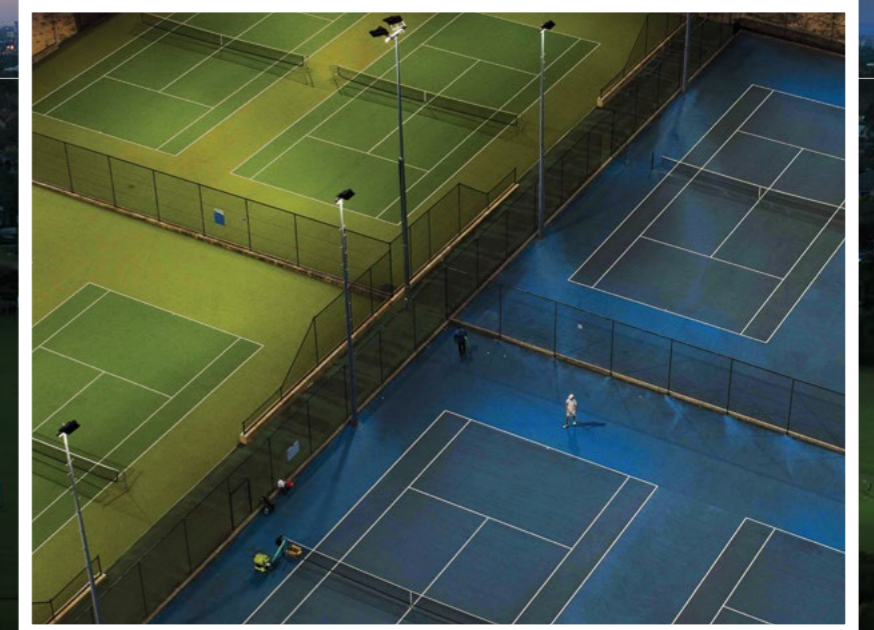
While Court Master is ideal for sports facilities such as tennis, bowls, soccer, hockey and netball, it can also be used effectively in car parks due to its inherent light spill and glare control characteristics.

Court Master is constructed with high-impact resistant materials and protective anti-corrosion treatment, making it suitable for harsh environments including coastal locations.

The Lumitex Court Master LED Sports Light delivers excellent performance for sports and critical area lighting applications.

FEATURES

- Multiple mounting options
- Slim design and high output
- High-impact polycarbonate lens
- Protective UV stabilised powder coating
- Microshield lens technology provides superb backward light control for obtrusive light.



TENNIS COURTS

Experience...

- ✓ Exceptional uniformity
- ✓ Superior glare control
- ✓ Energy efficient operation
- ✓ Precision optics
- ✓ Reliability and longevity
- ✓ 'Instant on' convenience

Lumitex has applied its commercial tennis court LED lighting technology to create a superior residential solution.

The Court Master LED light delivers unprecedented uniformity with greatly reduced glare compared to conventional lighting. Asymmetric lens design limits obtrusive light and helps contain light spillage on to neighbouring properties.

Courtmaster will impress with its performance and 'instant on' convenience. This light will deliver unprecedented uniformity with greatly reduced glare compared to conventional lighting.

IK10

IP66



Download latest datasheet

Lexus Dealership

When this Lexus dealership required a high performing LED solution to add sparkle to its luxury vehicle range, the Courtmaster was selected. What better way than to make pearlescent surfaces shine than the clean, white light delivered by quality LED technology.



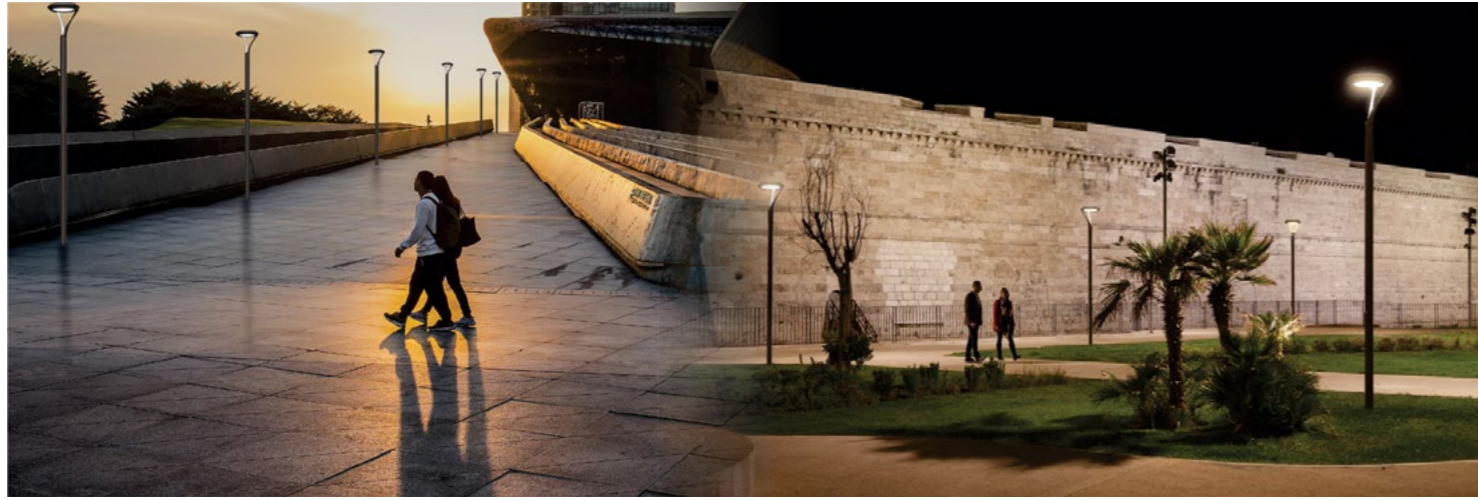
Perth City Malls

When City of Perth needed to upgrade their City Malls lighting they chose Lumitex to develop a custom solution, allowing existing lighting infrastructure to be retained. The result is brighter, glare free lighting, a safer environment and the reliability of a quality LED solution.



Area Lights

Sentinel



A high-quality, stylish architectural luminaire that delivers 100% of its light downwards, making it ideal for streetscapes, parks, plazas and other public spaces where control of light pollution is an essential attribute.

FEATURES

- High visual comfort.
- High-performance optics and uniform light distribution.
- Tool-free maintenance, replaceable driver unit and LED PCB.
- 20KA surge protection.
- Akzonobel powder coating to extend lifetime in harsh environments.



Download
latest datasheet

IK09

IP66

Bollards

RipRap

RipRap is a classically styled bollard constructed from die cast and extruded aluminium.

This architectural luminaire provides brilliant illumination to walkways and other outdoor spaces, improving the visibility, safety, and overall aesthetics of any outdoor area.



FEATURES

- Dark Sky compliant.
- Built tough, die cast aluminium.
- Polycarbonate diffuser.
- Also available as post top option.

IK08



Download
latest datasheet

IP65

Decorative Pathway/Roadway

Parkway

The Lumitex Parkway street and pathway light replicates the distinctive visual characteristics of popular existing heritage style street lighting, while delivering LED performance, reliability and energy savings.

FEATURES

- Whole body die-cast aluminium housing.
- Double photometric diffuser.
- UV-stable Polycarbonate lamp cover.
- Sealed lamp housing.



Download
latest datasheet

IP65

Decorative Pathway/Roadway

Parliament Heritage

This traditional style lantern design is updated with integrated LED chips. It is robustly constructed of high-quality corrosion resistant aluminium.

Specialised optics efficiently cast light without intrusion. They are ideal for general residential and commercial applications.

FEATURES

- High corrosion resistance.
- High purity aluminium.
- Polyester powder coated.
- IP66 LED module.
- IK10 Polycarbonate impact resistance diffuser.
- Controlled light distribution.

5
Year
Warranty

IK10

IP66



Download
latest datasheet

Decorative Pathway/Roadway

Lane Lighter



Sandown Park

This multi-use park in Ellenbrook, Western Australia attracts a wide range of local community utilising the space from childrens playgrounds, family BBQs to weddings. The park required a high performing LED solution to add visibility and security, the Lane Lighter was best suited to this purpose.



Pathway/Roadway

Lane Lighter

The Lane Lighter is a high-performance, streamlined lighting solution ideal for pedestrian pathways, cycle paths and minor roadway applications.

The latest lens-on-LED beam control is utilised to deliver high luminous outputs directly to the application to significantly reduce issues of glare and light pollution.

Control options include DALI, 1-10V and daylight sensors to optimise efficiency in any application, while flexible installation features allow easy retrofitting to existing poles.

FEATURES

- Exceptional uniformity.
- Tool-less opening for easy serviceability.
- Power isolation upon opening.
- Built-in surge protection.
- Superior temperature stability.
- Die-cast aluminium alloy body.
- Corrosion protection – Multi-stage treatment process.
- Horizontal and vertical spigot mounting options with 15° spigot tilt range.



IK08

IP66



Download
latest datasheet

Pathway/Roadway

Lane Lighter

The Lane Lighter is a high-performance, streamlined roadway lighting solution offering flexible installation options as standard.

Control options available include DALI, 1-10V and daylight sensors to optimise efficiency in any application. The aerodynamic and lightweight design reduces wind resistance and allows easy retrofitting to existing poles.

Lane Lighter utilises the latest in lens-on-LED beam control to deliver high luminous outputs directly to the application to significantly address issues of glare and light pollution.

FEATURES

- Exceptional uniformity.
- Tool-less opening for easy serviceability.
- Power isolation upon opening.
- Built-in surge protection.
- Superior temperature stability.
- Die-cast aluminium alloy body.
- Corrosion protection – Multi-stage alloy treatment process.
- Horizontal and vertical spigot mounting options with 15° spigot tilt range.

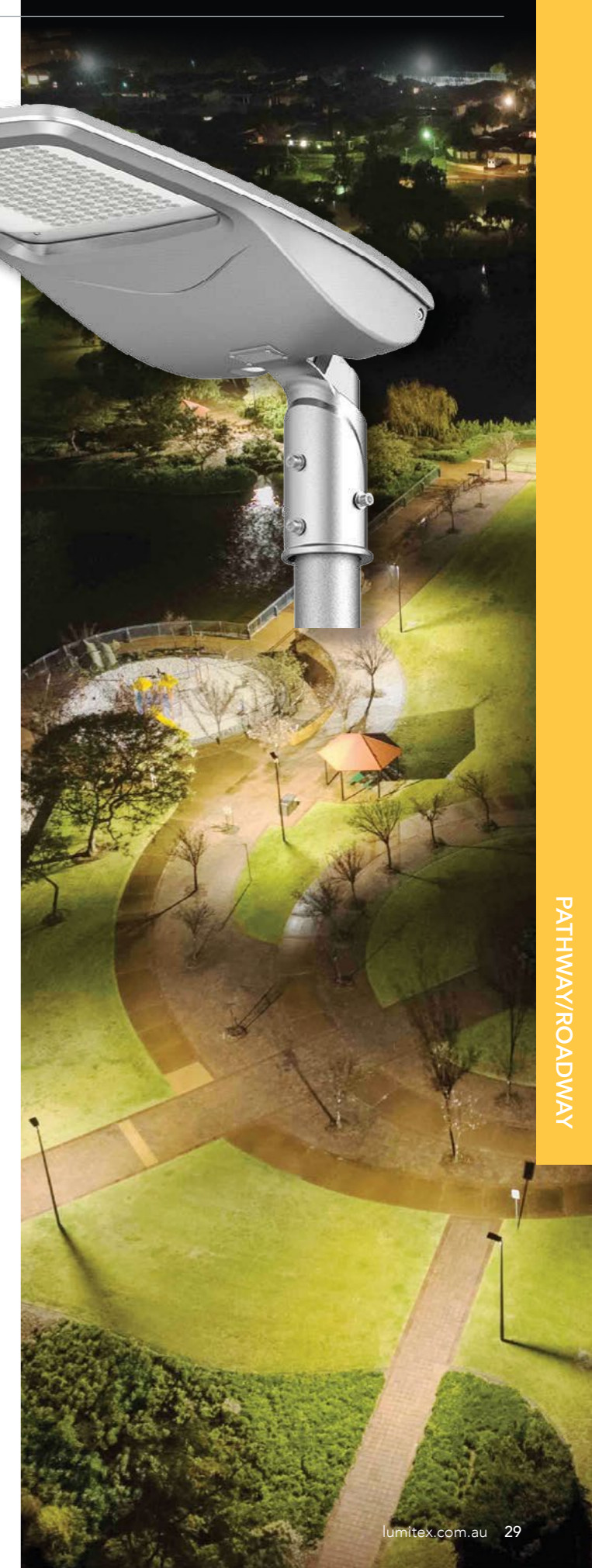


Download
latest datasheet



IK08

IP66

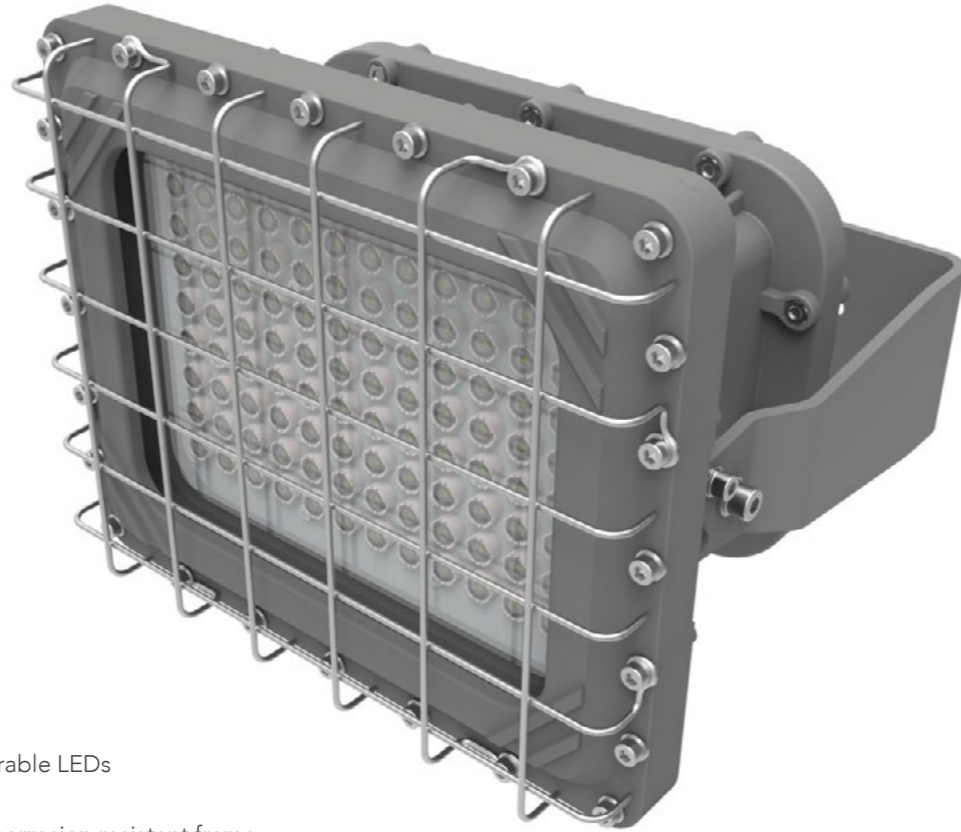


Industrial Explosion Proof

Defender

Explosion-proof floodlights and linear lights

Australian complied industrial lighting designed for hazardous installations. This range is designed for hazardous installations in the presence of flammable vapours, gases, combustible dusts or vibration as defined by the NEC and IEC. They are also rated to resist moisture and corrosion to NEMA 3X and 4X areas where wind, water or high ambient temperatures can be expected. Defender floodlights are suitable for Zone 1/21 and Zone 2/22.



FEATURES

- Shock and vibration-resistant – Durable LEDs with solderless board connection.
- Copper-free aluminium body and corrosion resistant frame.
- All exposed fasteners with 316 grade stainless steel.
- High temperature silicone gasket.
- Thermal shock and impact resistant glass lens.

COMPLIANCE:

Certification:

- IECEx UL 17.0099X
- Ex d IIB T6 Gb/Ex tb IIIC T85°C Db

Standards:

- IEC 60079-0:2011
- IEC 60079-1:2014
- IEC60079-31:2013
- EN 60598-1:2015
- EN 60598-2-5:1998
- EN 62471:2008
- EN 62493:2015

Division:

- Zone 1, Zone 21
- Zone 2, Zone 22



Download
latest datasheet

Industrial Explosion Proof

Archer

The Archer Series linear LED is robustly designed for installation in hazardous areas in the presence of flammable gases or combustible dusts as defined by ATEX / IECEx. Zone 1/21



Ranger

The Ranger Series LED luminaire is designed for installations where moisture, dirt, corrosion and vibration may be present and in locations made hazardous by the presence of flammable vapours or gases. Zone 2/22



Solar Lights

Azimu

A professional, dependable lighting solution for applications where access to mains power or cable trenching is not viable.

Suitable for mines sites, parks, car parks and other open spaces requiring general illumination without mains power. Daylight and microwave movement sensors are standard, programmable inclusions.

The Azimu features a choice of wattages backed by high efficacy panels, coupled with Maximum Power Point Tracking charging (MPPT) and LiFePO4 batteries for longevity.

Internet based camera options available for municipality and other security applications.

Azimu features rapid installation and easy commissioning via infrared remote control.



Download latest datasheet



Illuminate with Confidence: Lumitex LED Lighting Solutions

At Lumitex, we understand that seamless integration into your chosen lighting management system is crucial. That is why our LED lighting fixtures are engineered to effortlessly adapt to a variety of lighting control protocols, ensuring compatibility with your project's specific needs.

Versatility Across Protocols:

Lumitex LED fixtures are designed to harmonize with the most prominent lighting control protocols, providing you with the assurance that your lighting solution can effortlessly integrate into your selected management system. Our fixtures seamlessly communicate with:

DALI: Empower your lighting control with Digital Addressable Lighting Interface.



DMX: Achieve dynamic and synchronized lighting effects through DMX protocol.



Analog: For those who prefer the simplicity and reliability of analogue control.

Casambi: Experience intelligent, wireless control with Casambi technology.



Zigbee: Harness the power of Zigbee for efficient and reliable communication.



Bluetooth: Enjoy the convenience of wireless connectivity with Bluetooth.



KNX: Seamlessly integrate into KNX building automation systems.



C-Bus: Enhance control with C-Bus, ensuring a sophisticated lighting experience.

And others...
Your Project, Your System.

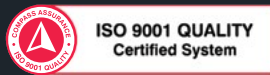
Lumitex takes pride in its adaptability. Whether your project demands the precision of DALI, the creativity of DMX, or the simplicity of Analog control, our fixtures are here to complement and enhance your vision. We go beyond being just luminaires; we become an integral part of your lighting management strategy.

Assured Integration:
Rest easy knowing that Lumitex is well-versed in all major lighting control protocols. Our commitment is to provide lighting solutions that seamlessly integrate into your project's selected management system. Illuminate with confidence, illuminate with Lumitex.



Lumitex
LED LIGHTING

Working with LEDs since 1996



Distributed by:



CONTACT US

Phone - (08) 9250 4178

Fax - (08) 9463 1464

Email - projects@lumitex.com.au

7 Rothschild Place, Midvale 6056, Western Australia

lumitex.com.au